

dermalogic

dermalogic

Towel Warmer
MANUAL



Thank you

for choosing **dermalogic**

This appliance provides warm, wet or dry towels, it's the ideal choice for towel warming and storage in your spa, salon, restaurant, school or hotel etc.

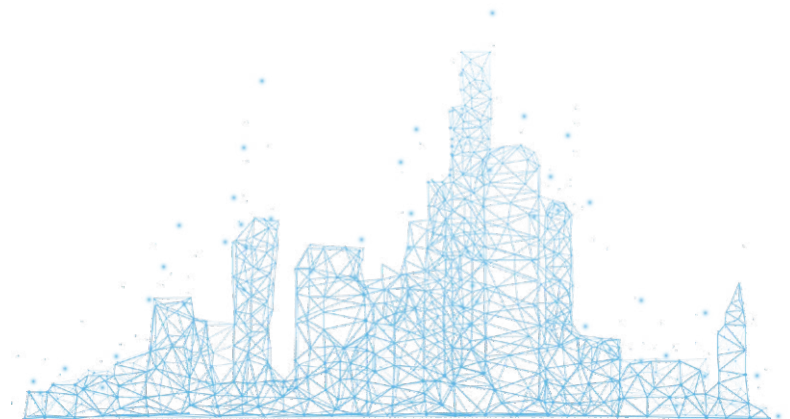
dermalogic products are laboratory tested and recommended by medical professionals and organizations worldwide.

For best use of our products, please refer to the manual.



TABLE OF CONTENTS

| | |
|----------------------------------|----|
| 1.Important safeguards | 3 |
| 2.Features | 6 |
| 3.Diagrammatic sketch | 7 |
| 4.Specifications | 8 |
| 5.Control panel | 10 |
| 6.Cautions | 11 |
| 7.Tips for daily use | 12 |
| 8.Maintenance and cleaning | 12 |



1. Important safeguards

When using an electric appliance, in order to reduce the risk of fire, electric shock, or personal injury when using your product, basic safety precautions should always be followed, including the following:

For your safety, read all instructions carefully before using the appliance and retain these instructions for future reference.

- Never locate the warmer where it may fall into a bathtub, shower, swimming pool or any other water container.
- Towels, Steam, Rack, Tray and inside surfaces of appliance are HOT and can be dangerous. Pay your special carefulness when reloading or removing hot towels, racks or trays out of the unit. Always use protective gloves when handling hot tray, rack or towels.
- To avoid burns, do not put "hot" towels right taken out from a towel warmer on any bare surfaces of human's bodies.
- Do not place heavy objects or a container water in or on top of the cabinet.
- Do not use the door left opened.
- Do not run power cord under carpeting.
- Do not cover cord with throw rugs, runners or the like. Arrange cord away from traffic areas and where it will not be tripped over.
- To disconnect the warmer, set control to OFF and then remove the plug from the outlet.

- Prior to use, ensure that you are connecting this product to a dedicated, properly grounded electrical outlet rated for use with this appliance.
- Each heating appliance provided with a 2-wire polarized attachment plug shall be provided with the following instructions or the equivalent: This appliance is equipped with a polarized plug (one blade is wider than the other). To reduce the risk of electrical shock, this plug is intended to fit into a polarized one-way outlet only. If it does not fit, contact a qualified electrician. Do not modify the plug in any way.
- A short power cord has been provided to prevent the risk of it becoming tangled or being tripped over.
- Extension cords may be used if care is exercised in their use.
 - a. The marked electrical rating of the extension cord should be at least equal to the electrical rating of the appliance.
 - b. The longer cord should be arranged so that it will not drape over the countertop or tabletop where it can be tripped over, snagged, or pulled on unintentionally.
- Always unplug from outlet when not in use, before appliance maintenance cleaning and replacing lamp bulbs. Always power off the appliance before unplugging.
- Do not operate this appliance if the cord or plug is damaged or came in contact with water.
- Do not operate this appliance if it has malfunctioned or has been damaged in any manner, or fell into water.
- Do not let cord hang over an edge, a table or a counter, or touch heated surfaces.
- Never use the cord as a handle, pinch or pull the cord around sharp edges or corners. Do not run equipment over the cord.
- To disconnect, hold the plug and pull it from the wall outlet. Never yank on the cord.

- Do not handle the plug or the appliance with wet hands.
- Always turn off all operations before unplugging the appliance.
- To protect against electrical shock do not immerse the cord, plugs or appliance in water or other liquid. Do not place or store the product where it can fall or be pulled into a tub or sink
- This appliance is not intended for use by children or persons with reduced physical, sensory or mental capabilities, or lack of experience and knowledge unless they have been supervised or instructed to use of the appliance by a person who is responsible for their safety. Close supervision is necessary when the appliance is operating near these people.
- Keep this appliance out of reach of children. Children should be supervised to ensure that they do not play with the appliance.
- Do not use the appliance for purposes other than those intended.
- Never use any accessories or parts from other manufacturers that are not specifically recommended for this appliance. In such case, this appliance's warranty will be void.
- For household use only. Do not use outdoors.
- There are no self-serviceable parts inside the appliance. Do not attempt to open, service, or repair the appliance by yourself. All servicing should be performed by an authorized service representative. Failure to observe this requirement shall void any warranty, stated or implied.
- Always place the appliance on a level and firm surface.
- Never move, tilt, or open the appliance door when in use. Always power off and unplug the unit before moving it.
- Never place any items on top of the appliance.
- Do not use chlorine or harsh chemicals to clean the appliance, as it may cause potentially cause damage to the unit.

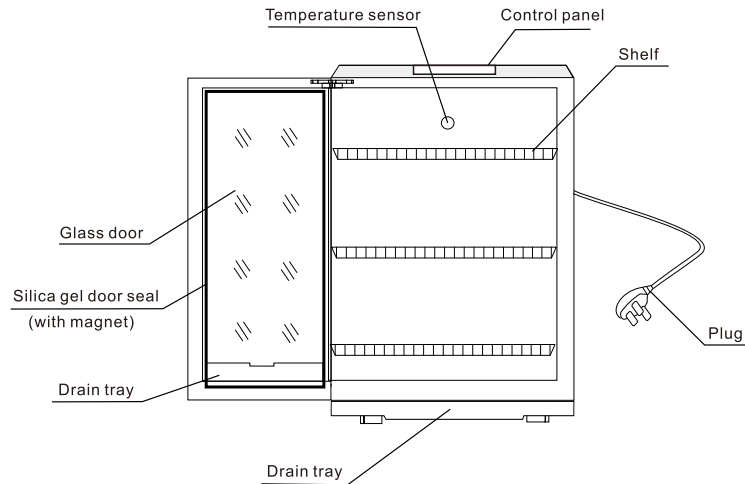
2.Features

The design was based on the demand characteristics of users, which are widely suitable to multiple application scenarios for different types of customers . Some features have been very welcome by lots of customers as followings.

Here are some of their favorite features:

- 1.Novel design
- 2.Push-pull shelves
- 3.High efficiency heating element
- 4.Silica gel door seal
5. High quality components

3. Diagrammatic sketch



Installation

- Place the unit horizontally on a flat, stable surface away from excessive heat, humidity and vibration.
- Set the removable drain tray into its slot below the cabinet door.
- Plug into a standard house current outlet.
- Place shelf in grooves along inner sides of the cabinet. Open the door and fill unit with towels to be warmed, then close the door.

4. Specifications

| | | |
|--------------------------|-------------------------|-------------------------|
| Model | 30L | 60L |
| Rated Voltage | 110V~ | 110V~ |
| Sterilization Technology | Heat | Heat |
| Capacity | 30L | 60L |
| Internal Temperature | 149-194°F (65-90°C) | 149-194°F (65-90°C) |
| Safety Features | Fuse/Thermistor | Fuse/Thermistor |
| Rated Input Power | 220W | 320W |
| Material | Stainless | Stainless |
| Product Dimensions | 17.3''*14.2''*16.9'' | 17.3''*14.2''*26.2'' |
| Product Weight | 11 lbs | 22 lbs |
| Box Dimensions | 20.5''*17.3''*19.7'' | 20.5''*17.3''*29.1'' |
| Gross Weight | 13.2 lbs | 26.5 lbs |
| Accessories | 2 Shelves, 2 Drain tray | 3 Shelves, 2 Drain tray |

5. Control panel

- Digital display screen



- ON/OFF: When you press this button, means power on or power off.
- TEMP: When power on, press this button to choose temperature 65/70/75/80/85/90°C.
- TIME: When you have selected the temperature, press this button to choose work time 1/2/3/4/5/6/7/8/9/10/11/12hours.
- Please select the “TEMP” and then the “TIME” .
- 3 seconds after selecting the time button, the machine will automatically start to work and start the countdown. When the countdown is over, the machine will automatically stop working.

6. Cautions



- 1 The appliance should be installed in a cool dry place away from any inflammables or explosives. It should be used at least 4 inches from the wall and other fixtures.
- 2 Please use the correct socket for the power cord. It is also recommended to use a surge protector.
- 3 Gently operate the door of the warmer, holding the machine in place as you open the door if it gives you difficulty.
- 4 Do not let children touch and use the appliance.
- 5 Do not start the appliance if the plug, cable, or any other components are broken or non-working. Please contact the manufacturer.
- 6 Do not move, lay down, or dismantle the appliance while it is powered.

7. Tips for daily use

- Put the towel into the cabinet and onto the shelf. Keep the towel away from any container side, otherwise the towel might be discolored and even deformed.
- The towel shall not stay in the warmer for over 1 day, otherwise, it will become too dry, deformed or stink. The dry towel is not suitable for heating.
- Put the drain tray steadily. Take excess water out of drain tray as necessary.
- Clean cabinet exterior using a dry cloth or damp cloth with mild detergent. Unplug the unit when cleaning.
- Do not use cleaners containing thinners, benzene, or abrasives.
- For periods of disuse exceeding three days, wipe the inside of cabinet thoroughly and leave door ajar to allow it dry up completely.
- A towel warmer with ultraviolet can only work after door is closed, otherwise, the radiation will be harmful to human. Do not expose your eyes to the ultraviolet light!
- The ultraviolet light is on when a towel warmer is working. Please turn off the light after 20 minutes and no more than 20 minutes.
- When the temperature inside the cabinet reaches upper limits of the unit temperature range designed, the thermostat will work automatically to shut itself off until the inside temperature drops below a certain level, at which time it will turn the heating element back on again.
- To test normal UV operation, open the cabinet door; while avoiding eye contact with the UV light turn the UV, switch at the right-hand side of the unit on; depress the safety button on the cabinet frame and the UV light will come on.

8. Maintenance and cleaning

1. Please disconnect power before cleaning.
2. Soft cotton or sponge dipped in natural detergent can be used for cleaning internal and external.
3. Do not use anything dipped in gasoline, polish, or decontamination powder to clean the machine.
4. Do not spray water directly onto the appliance to avoid electrical damage.

Compulsory Warning

- No user serviceable parts inside. Unauthorised modification voids warranty. If faulty, return to place of purchase for replacement.
- Before first using your Towel Warmer, it is most important that you read and follow the instructions in this use and care booklet, even if you feel you are quite familiar with this type of appliance.
- Your attention is drawn particularly to the section dealing with IMPORTANT SAFEGUARDS. Find a place and keep this booklet handy for future reference.
- Your Towel Warmer is safe and easy to use. It has been designed to function quietly and safely under normal circumstances.
- Check that the voltage marked on the product corresponds with your supply voltage.

Warning: This appliance must be earthed.

Cautions: When the device is turned on, it will take some time to start heating.